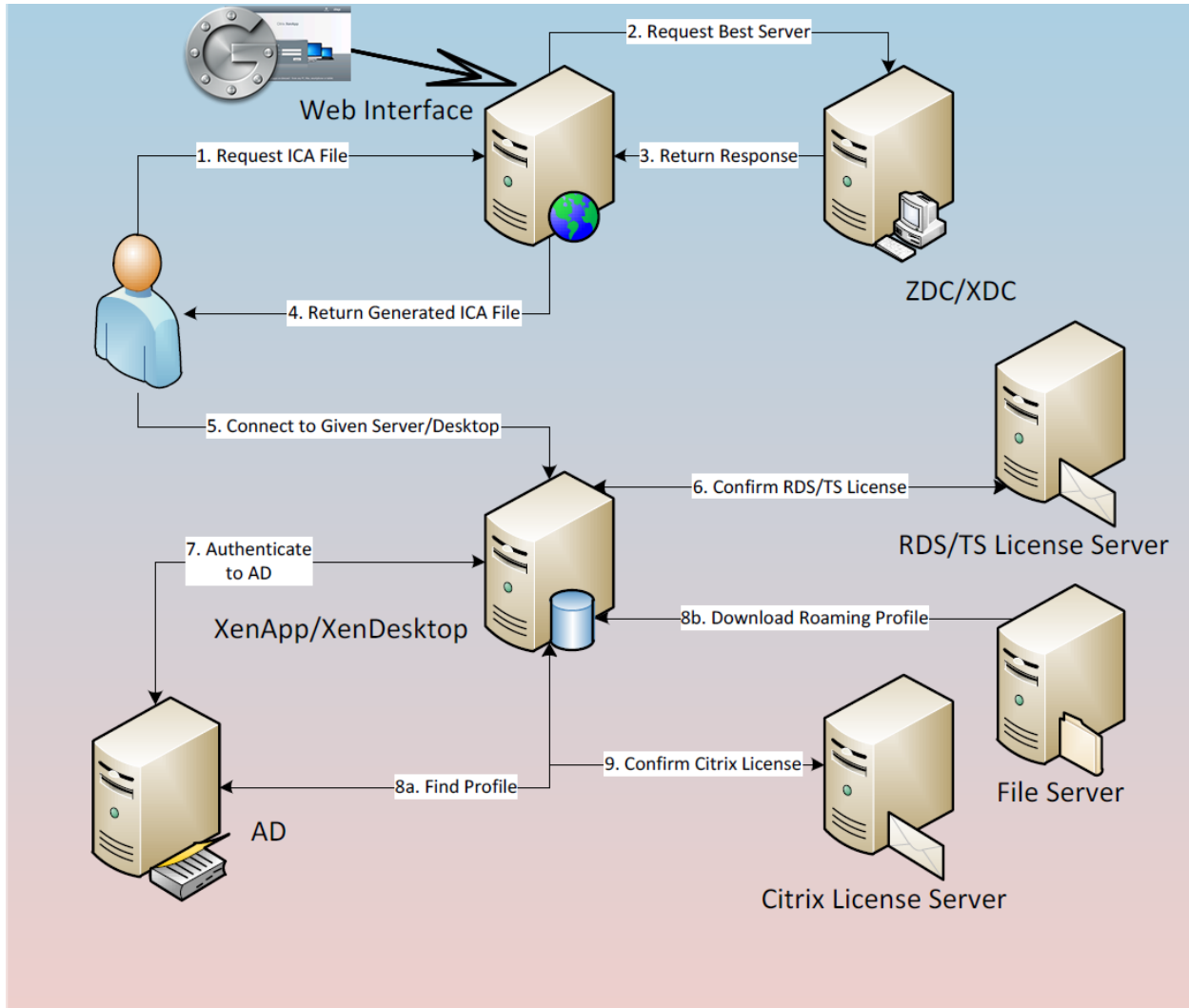


Google Authenticator for Citrix Web Interface 5.4

A Web Interface customization package that allows Dual Factor Authentication for Citrix Web Interface 5.4 using Google Authenticator Mobile App.

Typical network diagram

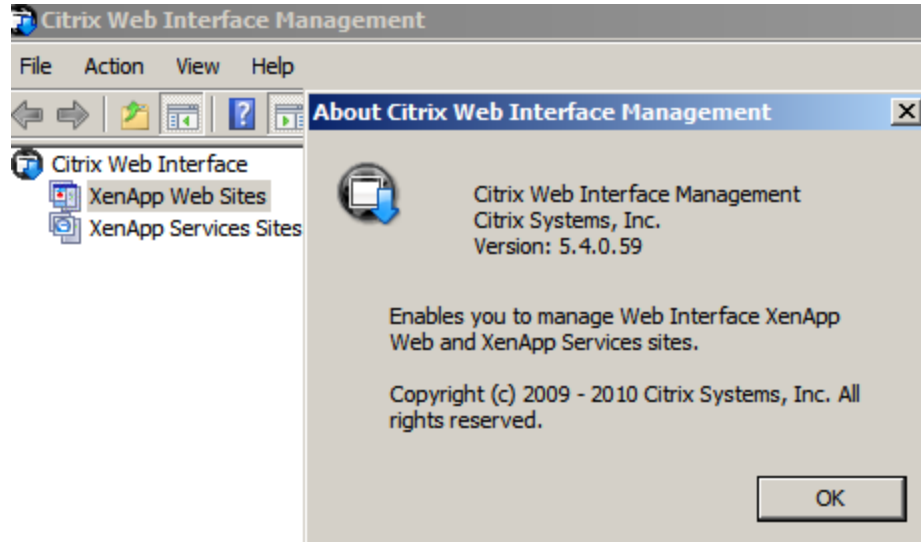
This package is designed to enable Google Authenticator based strong security for Citrix XenApp or XenDesktop environments using Citrix Web Interface 5.4 and secured by Citrix Netscaler or Citrix Secure Gateway



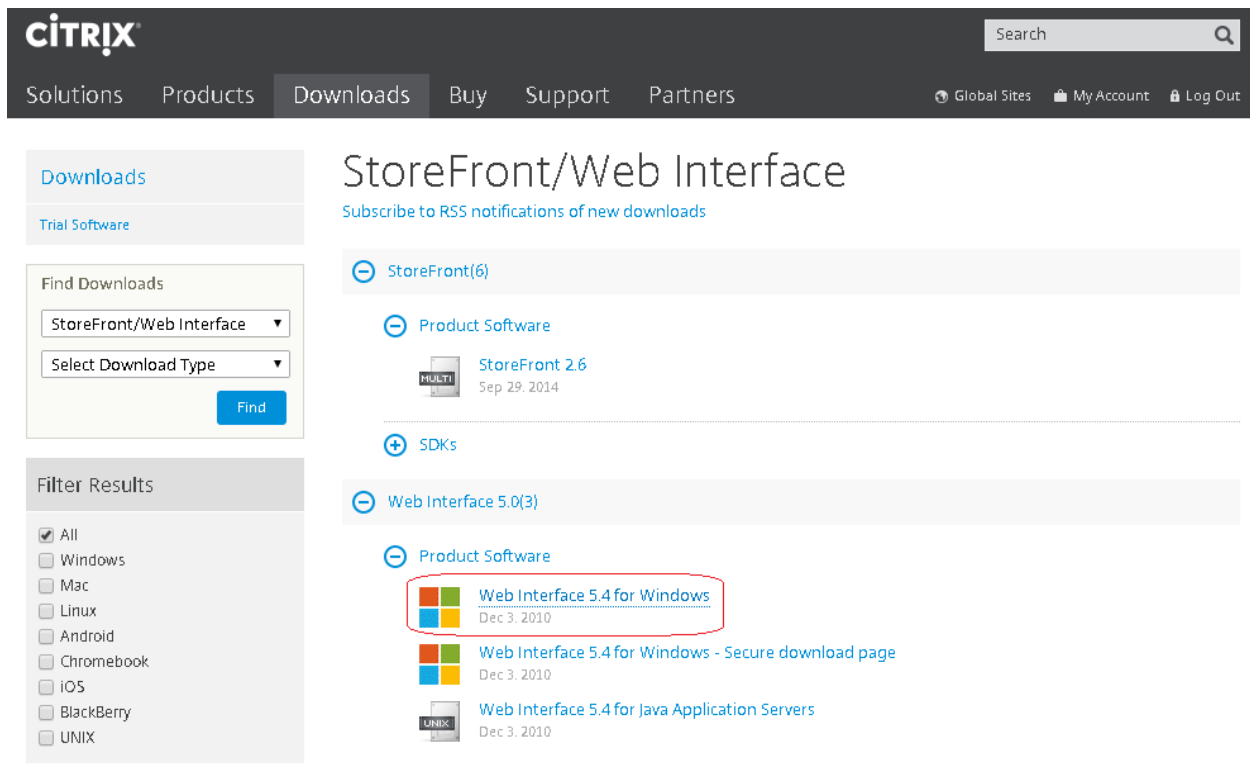
Google Authenticator for Citrix Web Interface is based on Web Interface customization, so no additional server (e.g. Radius) is required.

Installation

The only prerequisite for installing the package is Citrix Web Interface version 5.4. To check the installed version, open Citrix Web Interface Management console, and choose Help>About Citrix Web Interface Management. The version should be 5.4.x as shown on the screenshot below.

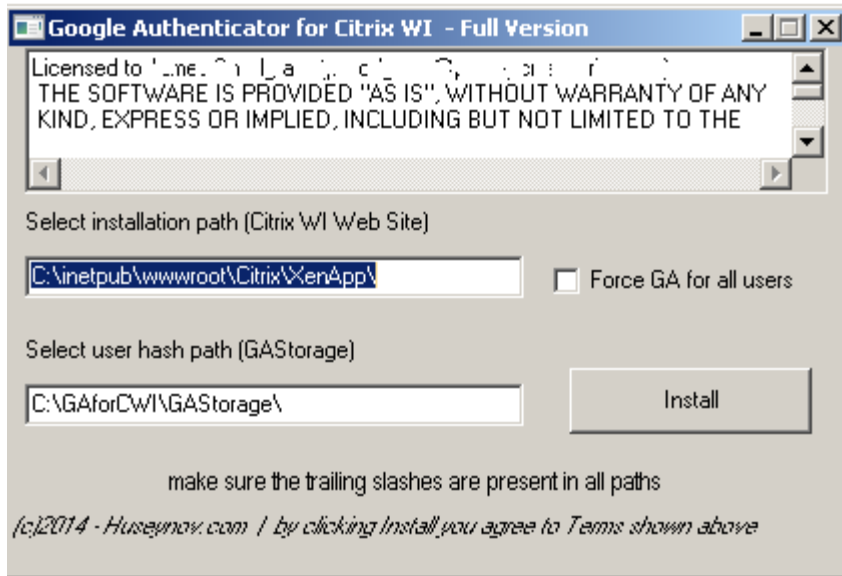


If the installed version is lower than 5.4.x, download and install the latest Citrix Web Interface package from Citrix website using this URL: <https://www.citrix.com/downloads/storefront-web-interface.html> (you will need your Citrix account details)

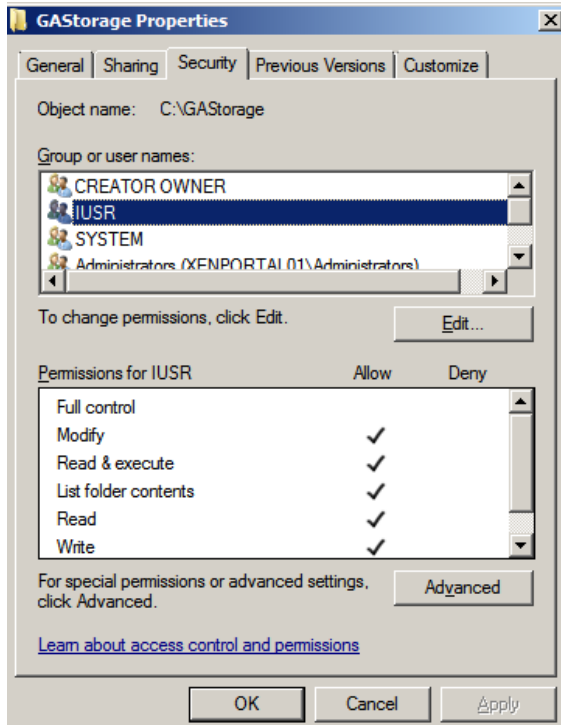
A screenshot of the Citrix website's Downloads page for StoreFront/Web Interface. The page has a dark header with the Citrix logo and navigation links: 'Solutions', 'Products', 'Downloads', 'Buy', 'Support', 'Partners'. There are also links for 'Global Sites', 'My Account', and 'Log Out'. The main content area is titled 'StoreFront/Web Interface' and includes a search bar and a 'Subscribe to RSS notifications of new downloads' link. A sidebar on the left has a 'Find Downloads' section with dropdowns for 'StoreFront/Web Interface' and 'Select Download Type', and a 'Filter Results' section with checkboxes for various operating systems. The main content area shows a list of download options under 'StoreFront(6)'. The 'Web Interface 5.4 for Windows' option is highlighted with a red box. Other options include 'StoreFront 2.6', 'SDKs', 'Web Interface 5.0(3)', 'Web Interface 5.4 for Windows - Secure download page', and 'Web Interface 5.4 for Java Application Servers'.

Important: Make a copy of the current web folder (C:\inetpub) before running the installer.

Once Web interface has been upgraded, run the provided Google Authenticator for Citrix Web Interface installer to install the customization package.



Then, verify that the GAStorage folder (by default located in C:\GAforCWI\) has the following entry in the permissions table:



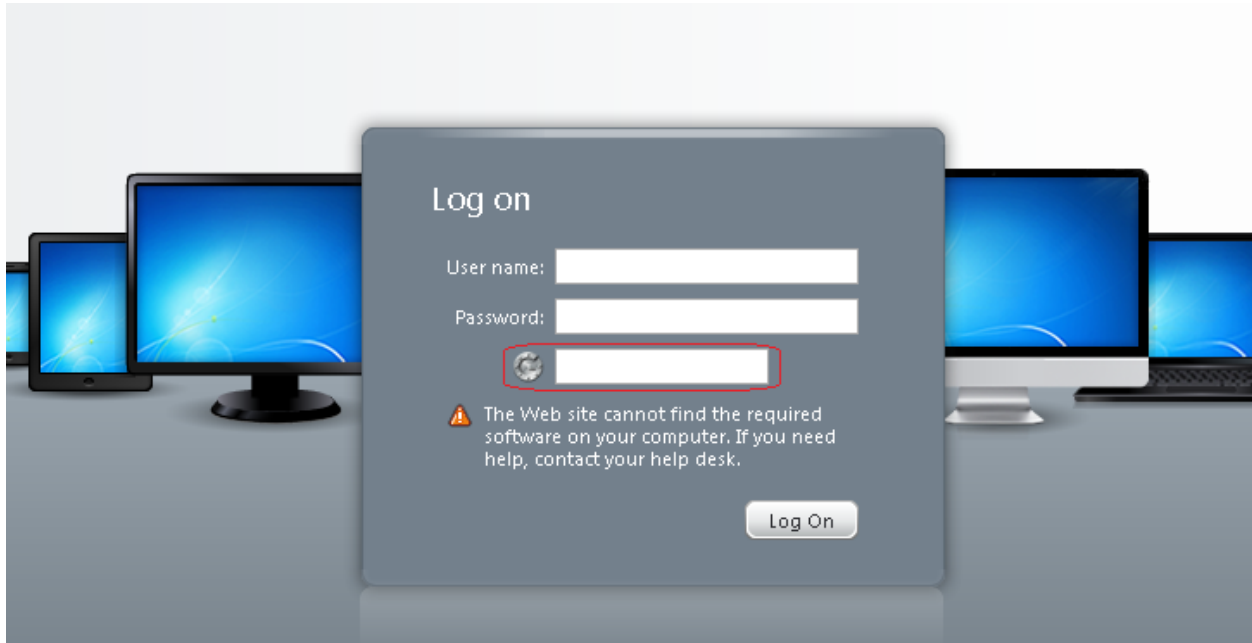
If this entry does not appear, manually assign Full control permissions for IUSR user (local).

Testing

Once the procedures above have been completed, your Web Interface should be ready to support two-factor authentication with Google Authenticator.

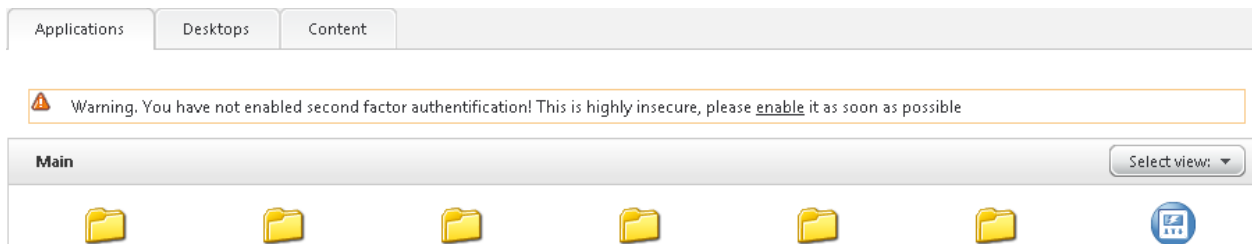
Login form

Login form should have the OTP field added as shown below. Users without second factor enabled should leave this field empty when logging in.



Enabling Google Authenticator

Users are prompted (or forced) to enable two-factor authentication if not enabled on the first login.



Google Authenticator can be enabled on the "Settings" page by checking the relevant checkbox and clicking Save.

Settings

Save Cancel

General

Configure settings that are applied across the whole Web site

Language: English

Show Hints (Full Graphics only)

Client for accessing virtual desktops and applications

The **Native Client** is currently selected.

Run Client Detection

User Experience

Virtual desktop or application window size

Window size: Seamless

Custom size (px): 1024 × 768

Percentage of screen: 80 %

Enable two factor authentication

Enable two factor authentication with Google Authenticator



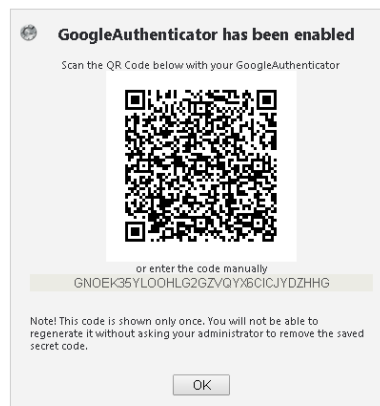
Enable Google Authenticator verification for this account

Note! You will not be able to disable this and will have to ask your administrator to do it for you

Save Cancel

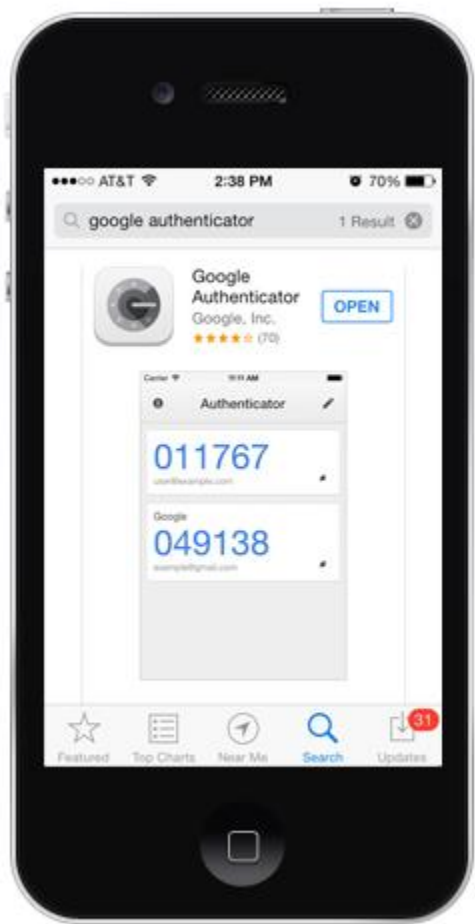
Right after saving the modification, a QR code to be scanned with Google Authenticator will be shown. Please note that from this point onwards the user will need to provide the OTP code in order to login.

Citrix/XenAppGA/site/default.aspx?CTX_MessageType=SUCCESS&CTX_MessageKey=SettingsSaved

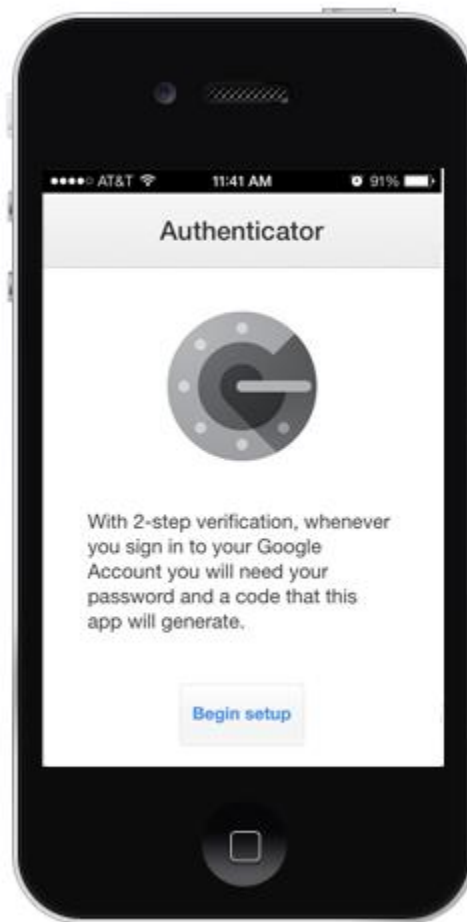


Adding Citrix Web Interface security hash to the Google Authenticator App

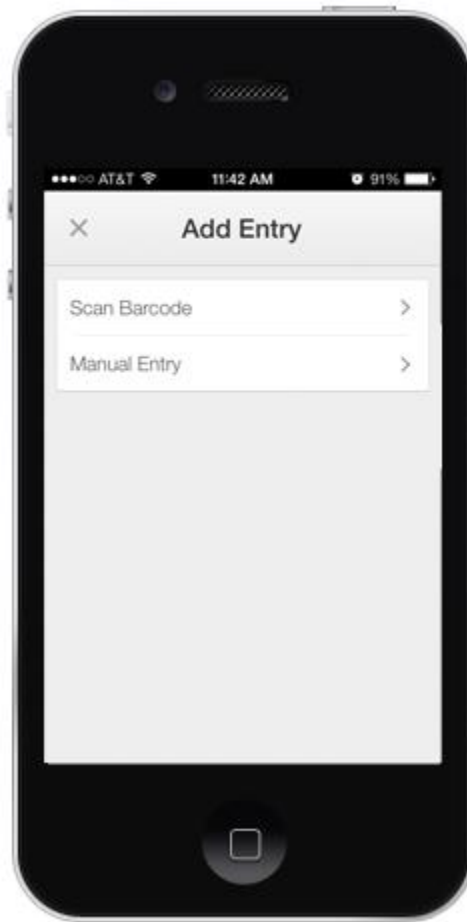
1. Open the Google Authenticator App on your mobile device.



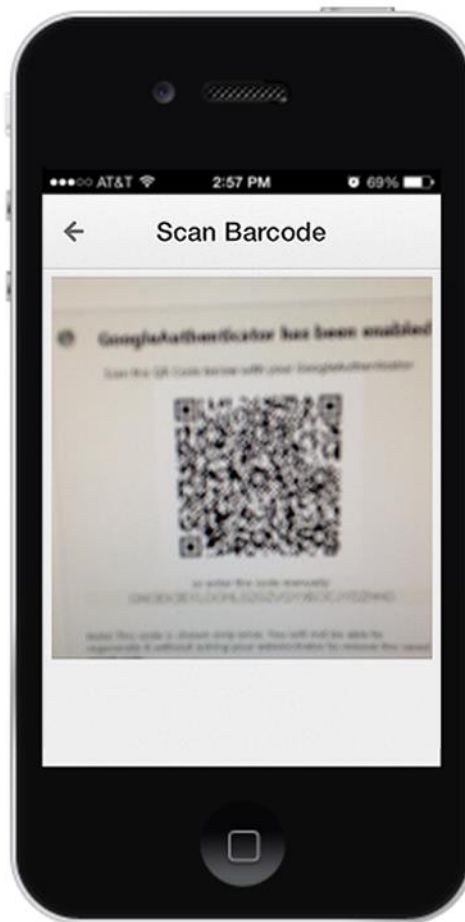
2. The app will walk you through the setup. Click **Begin Setup**.



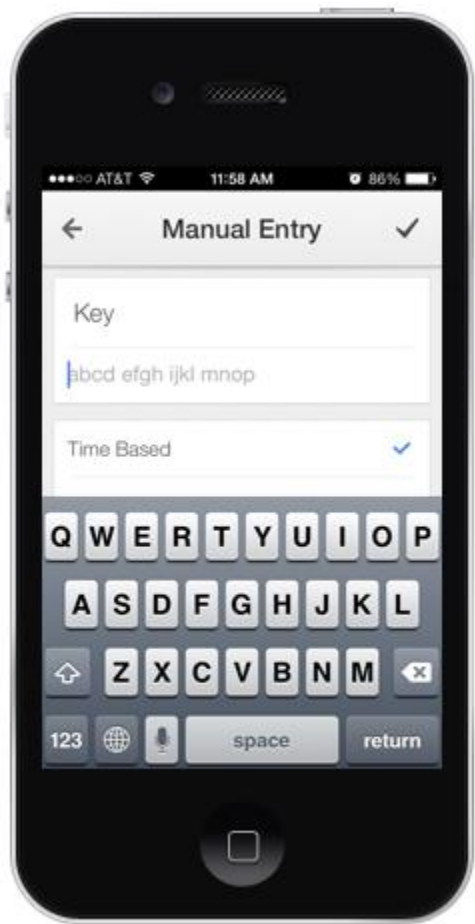
3. On the next screen, you're given two ways to add a new site to your Google Authenticator app. Select **Scan Barcode** or **Manual Entry**.



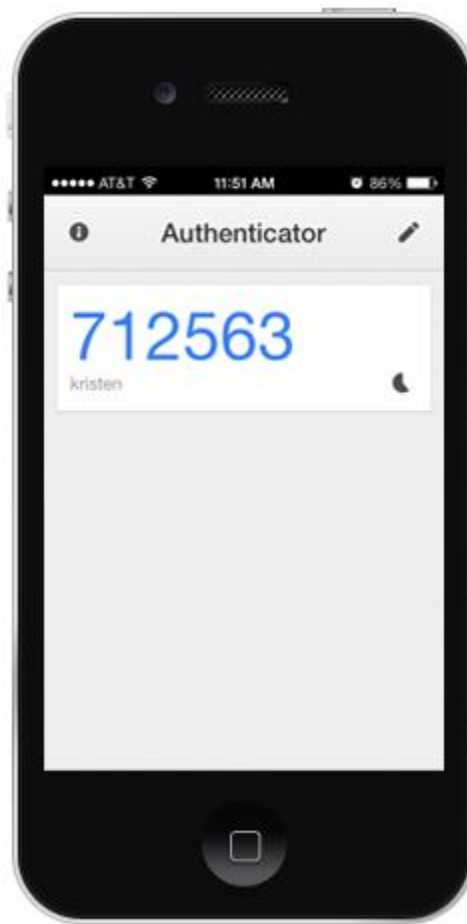
4. For **scan barcode**, a QR code scanner will appear for you to scan the QR code included on your WordPress User profile page. Scan this QR code by pointing your phone camera at the screen



5. For the **manual entry** method, use the key provided below the QR code on your Citrix Web interface Settings page.



6. Once Google Authenticator has recognized your QR code or key, a new site will be added to the app.



7. Now you can use the 6-digit code generated by the app to log in to your Citrix Web Interface site (just note this code refreshes every 30 seconds)

Note: if the OTP code provided is not being accepted, please check the system clock on the server hosting Web Interface and time on your smartphone.
